

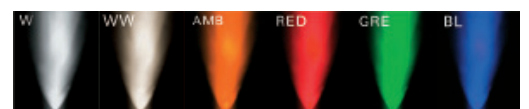


1W LED Marker Light

The 1W LED Marker light is a durable LED Fixture designed for marker lighting applications such as pathway lighting, deck lighting, driveway lighting, wall lighting, handrails and balustrades, and many more.

Made from 316 stainless steel it is suitable for both interior and exterior usage.

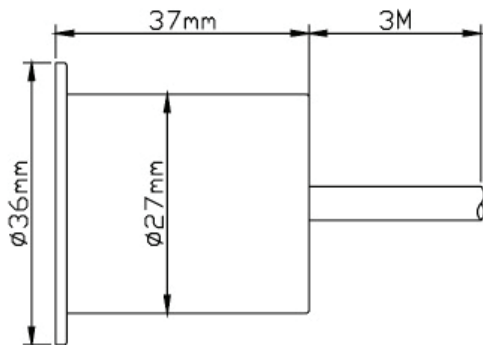
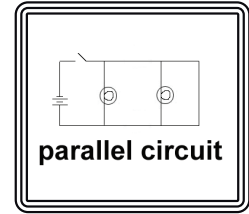
Available Colours



Technical Specifications

Product Description	1W LED Marker Light
Height	37mm
Width	27mm
Trim	36mm
LED Quantity	1 x CREE LED
IP Rating	IP 68
Supply Voltage	12 - 24VDC
Power Consumption	1W
Beam Angle	Dispersive
Connection Type	Parallel
LED LifeSpan	50,000 hours
Dimmable	No

Wiring Type



IP Rating
IP68

Input
12-24VDC

Power
1W

Beam
Dispersive

LED's
CREE

Product Code

Cool White	LED-IG-118-W
Warm White	LED-IG-118-WW
Amber	LED-IG-118-Y
Red	LED-IG-118-R
Green	LED-IG-118-G
Blue	LED-IG-118-B